

TN/0003	Technical Support Note	<b>DEFINIENS</b> Understanding Images
Definiens XD and Definiens Enterprise Image Intelligence Suite	<b>Licensing Troubleshooting Guide</b>	Page 1 of 15

## 1 Overview

**Definiens** software is supplied with a software licensing system designed to ensure your organization utilizes software for which it is entitled. The helps organizations comply with their obligations. Like a significant number of other vendors Definiens utilizes software from the leading 3<sup>rd</sup> party supplier of license management software.

The licensing of the software is realized by means of licenses issued by Definiens and a small software program the license server on to which the license is uploaded and which the various software you have purchased from Definiens checks to see if you have license currently available for your software.

The first step in any installation is to install the license server and upload a license file provided by Definiens. This should be done before other software is installed as each installation process will ask for details of the location of the license server.

<b>1 OVERVIEW</b>	<b>1</b>
<b>2 INSTALLATION PLANNING</b>	<b>2</b>
<b>3 LICENSE SERVER TROUBLESHOOTING (WINDOWS)</b>	<b>3</b>
<b>4 LICENSE SERVER TROUBLESHOOTING (LINUX)</b>	<b>8</b>
<b>5 LICENSE TROUBLESHOOT DEFINIENS CLIENT/SERVER</b>	<b>11</b>
<b>6 FAQ</b>	<b>15</b>

TN/0003	Technical Support Note	<b>DEFINIENS</b> Understanding Images
Definiens XD and Definiens Enterprise Image Intelligence Suite	<b>Licensing Troubleshooting Guide</b>	Page 2 of 15

## 2 Installation Planning

In order to select the correct approach it is important to understand how you plan to use Definiens software in your environment. There are a number of possible scenarios.

### 2.1 Single Desktop Installation

If you have a single copy of Definiens Developer or Definiens Developer XD please install the license server on your Desktop PC. Install the license server software and enter your activation ID.

Once you receive the license file from Definiens reinstall the license server and provide the license file to the installation process.

### 2.2 Multiple Desktop(Server) Installation

Install your license server on a separate PC in your network to allow these licenses to be shared between your team members and servers.

### 2.3 System Requirements

#### *Minimum Hardware Requirements*

- Intel® Pentium® 3 or compatible
- 512 MB RAM
- 100 MB available hard disk space

#### *Operating Systems*

- Windows® 2000 Professional (SP 4)
- Windows® XP Professional (SP 2)
- Windows® Vista
- Windows Server 2003® Std/EP® (SP 1)
- SuSE Linux 9.3
- SuSE Linux Enterprise 9 or 10
- RedHat Enterprise Linux 3 or 4

**Note:** Please ensure that your license server machine is always on if used to support multiple users. In addition, ensure that the license server is installed on a reliable and low latency network segment.

TN/0003	Technical Support Note	<b>DEFINIENS</b> Understanding Images
Definiens XD and Definiens Enterprise Image Intelligence Suite	<b>Licensing Troubleshooting Guide</b>	Page 3 of 15

## 3 License Server Troubleshooting (Windows)

### 3.1 Installation

This section describes the steps to install the Definiens License Server software und Windows.

1. After downloading and extracting a .zip file containing a setup.exe file, double-click it to start the installation.
2. Click **Next >** to continue.
3. Select **I accept the terms in the License Agreement** and click **Next >**.
4. Enter the **Activation ID** you received from Definiens.  
If you ordered multiple licenses, you may enter the **Number of Licenses** you want to install during this installation procedure.
5. Select **Create Activation Request** to save an activation request as file. Click the **Select File** button to determine the file location. After saving click **Next >** to exit the installation.
6. Send the saved activation request file by e-mail to [license@definiens.com](mailto:license@definiens.com).  
Definiens will return a license file by e-mail.
7. After receiving license file by e-mail, save it on the hard disk of the machine hosting the **Definiens License Server** software. Restart this installation procedure from the beginning and proceed until you can select **Activate Licenses** as in the step above.  
Then continue with the next step below.
8. Select **License File** and click the **Select File** button to determine the file location.  
Click **Next >** to continue.
9. After successful creation of the licenses click **Next >** to continue.
10. Choose from the list the **Start Menu Folder** in which you want to create the program's shortcuts. Alternatively, you can enter a name and create a new folder.  
Click **Next >** to continue.
11. Choose the destination folder in which you want to install the software. If you prefer to use a different folder click **Browse ...** and select another folder.
12. The installation has been configured successfully. Now, click **Install** to execute the installation.  
The installation progress is displayed in the status area. This information is saved at the **install.log** file. You can find this file in the installation directory. The default path is **C:\Program Files\Definiens *Client or component name, Version number*\Install.log**. Alternatively, you can save the installation details by right-clicking in the status area for

TN/0003	Technical Support Note	<b>DEFINIENS</b> Understanding Images
Definiens XD and Definiens Enterprise Image Intelligence Suite	<b>Licensing Troubleshooting Guide</b>	Page 4 of 15

the context menu to appear and choosing **Copy Details To Clipboard**. Then you can open a text editor and paste the text from the clipboard. Click **Next >** to continue.

14. The installation has been completed successfully. Click **Finish** to close and exit the setup process.

### 3.2 Add additional license files

This section describes the steps how to add additional licenses to the Definiens License Server.

1. After downloading and extracting a .zip file containing a setup.exe file, double-click it to start the installation.

2. Click **Next >** to continue.

3. Select **I accept the terms in the License Agreement** and click **Next >**.

4. Select :

**Activate Licenses:** The Definiens License Server software will not be reinstalled. Use this if you want to install one of the following new types of licenses to be distributed by this license server:

- Perpetual - A permanent license with no time expiry
- Provisional license – used for testing or trialing new versions.

5. Select **Load License File** and click the **Select File** button to determine the file location. Click **Next >** to continue.

6. The installation has been completed successfully. Click **Finish** to close and exit the setup process.

#### Note

You can also put the license file into the **C:\Program Files\License Server, Version number\lic** folder and restart the "DIALIC" service, to load additional licenses.

### 3.3 License rehost

Should you need to move your license server to another machine it will be necessary to "rehost" your licenses. This section describes the steps how to rehost your license server to a new PC.

1. Perform a new Installation (**as described 3.1 Installation**) on the new Definiens License Server Machine and send the new created activation request to ([license@definiens.com](mailto:license@definiens.com)) with the comment to rehost your license.

2. After you confirm via mail ([license@defineins.com](mailto:license@defineins.com)) that the old license file is deleted. You will receive a new license file which you should use to finish the Installation on the new License Server Machine.

TN/0003	Technical Support Note	<b>DEFINIENS</b> Understanding Images
Definiens XD and Definiens Enterprise Image Intelligence Suite	<b>Licensing Troubleshooting Guide</b>	Page 5 of 15

### 3.4 License Server Status using Imtools

This section describes how to troubleshoot your License Server Installation using Imtools.

1. To open the **Imtools**, go to the **Windows Start** menu and choose **Start > All Programs > License Server Version Number > LMTOOLS**
2. On the first screen make sure you select **LMTOOLS ignores license file path environment variables**.
3. Select the tab **Server Status** and choose **Perform Status Enquiry**
4. On the output you should see following lines:

```

-----
Status
-----
Flexible License Manager status on Mon 12/22/2008 20:07

[Detecting Imgrd processes...]
License server status: 27000@D620N008V
  License file(s) on D620N008V: C:\Program Files\License Server
  1.1\lic\Installed21122008162107.lic:C:\Program Files\License Server
  1.1\lic\Installed21122008205318.lic those lines tell you which license files are used

D620N008V: license server UP (MASTER) v11.6

Vendor daemon status (on D620N008V):

  DIALIC: UP v10.8
  Feature usage info:

Users of DefiniensDeveloper_XD: (Total of 10 licenses issued; Total of 1 license
in use) this line tells you which Product (DefiniensDeveloper_XD) is loaded, how
many license are loaded(10) and how many licenses are currently in use (1).

"LifeFramework_XD" v1.0, vendor: DIALIC
floating license

  dschoblocher D620N008V D620N008V (v1.0) (D620N008V/27000 201), start
Mon 12/22 20:10 this line tells you which user (dschoblocher),
Computer(D620N008V) and when (Mon 12/22 20:10) this license was checked out.

```

**If your output shows errors please send the log.log file which can be found in the License Server Installation folder to [license@definiens.com](mailto:license@definiens.com) for further debugging.**

### 3.5 Firewall Settings

This section describes how to configure your firewall for Definiens License Server.

TN/0003	Technical Support Note	<b>DEFINIENS</b> Understanding Images
Definiens XD and Definiens Enterprise Image Intelligence Suite	<b>Licensing Troubleshooting Guide</b>	Page 6 of 15

If you have a firewall running on your license server it will be necessary to configure appropriate communication ports. To do this you will need to change default settings in both your Definiens software configuration and on your firewall.

1. Open all license files stored on the machine hosting the Definiens License Server Software. The default path is: **C:\Program Files\License Server *Version number*\lic\License file.lic**.

2. Example of a license file header:

```
SERVER localhost DISK_SERIAL_NUM=abcdefg [{COMPport_1}]
VENDOR DIALIC [PORT={ComPort_2}]
...
```

Adapt the license file concerning the two necessary ports:

-The default `COMPport_1` is 27000. This port is used by the `Imgrd.exe` which is the macrovision license server. If you select another value than 27000 you have to adapt all Definiens **floating.lic** files located in the software installations manually.

-The default `COMPport_2` is random. This port is used by the `DIALIC.exe` which depends on the `Imgrd.exe` and shares the Definiens Product Licenses.

3. If you changed the value of `COMPport_1` in step 2 you have to change all **floating.lic** files, which are part of each Definiens software installation, such as:

- Definiens eCognition Grid Infrastructure Software on the primary node
- Definiens eCognition Node Software on processing nodes
- Definiens Enterprise Image Intelligence Clients.

### Note

The adaption of `floating.lic` files is not supported by the installer. During Definiens installations, you have to select Set licensing later on the Select the Definiens Licensing Option screen.

For each Definiens installation, open the **floating.lic** file. The default path for the client is:

**C:\Program Files\Definiens *Software name, Version number*\bin\lic\floating.lic**

And the default path for the server is:

**C:\Program Files\Definiens Grid, *Version number*\bin\lic\** and

**C:\Program Files\Definiens Grid, *Version number*\bin\Product *Server Version number*\lic\**

4. Example of a **floating.lic** file:

```
SERVER [license server IP or DNS name] ANY [{COMPport_1}]
USE_SERVER
```

Change the `COMPport_1` manually to the same value as used in step 2.

TN/0003	Technical Support Note	<b>DEFINIENS</b> Understanding Images
Definiens XD and Definiens Enterprise Image Intelligence Suite	<b>Licensing Troubleshooting Guide</b>	Page 7 of 15

5. Open the firewall for port **COMPort\_1** and **COMPort\_2**.  
You can find a example using Windows XP under section **5.5 Windows XP  
Firewall Settings example**

TN/0003	Technical Support Note	<b>DEFINIENS</b> Understanding Images
Definiens XD and Definiens Enterprise Image Intelligence Suite	<b>Licensing Troubleshooting Guide</b>	Page 8 of 15

## 4 License Server Troubleshooting (Linux)

### 4.1 Installation

This section describes the steps for installing one Definiens License Server Software.

1. Download and extract the latest **.zip** file containing the **License-Server- Version number-Build number-i586.rpm**
2. Change into the appropriate directory.
3. Start the installation by running the following command as superuser (root):  
**rpm -i License-Server- Version number-Build number-i586.rpm.**
4. Among other operations, the installation generates an **eCognition** user and installs the software to **/opt/License Server Version number**. Finally, an init script **DefiniensLicenseServer** is copied to **/etc/init.d**.
5. To obtain the ethernet address of the computer, execute command:  
**/opt/License Server Version number/lmutil lmhostid -n**
6. Send an e-mail to [license@definiens.com](mailto:license@definiens.com) . Be sure to include the ethernet address obtained in the previous step.
7. Store the license files you received from Definiens in the appropriate folder: The **floating\_server.lic** file is used for license servers. Store the **floating\_server.lic** file in the installation directory of the license server. The path is: **/opt/License Server Version number/**
8. Start the Definiens License Server Software by running as root user:  
**# sh /etc/init.d/DefiniensLicenseServer start**

### 4.2 Add additional license files

This section describes the steps to add additional license to a Definiens Linux License Server.

1. Copy all lines from the first line starting with **INCREMENT** from the new license file you received from Definiens and add it on the bottom of you existing **floating\_server.lic** file in you installation directory. The path is: **/opt/License Server Version number/**
2. Restart the Definiens License Server Software by running as root user:  
**# sh /etc/init.d/DefiniensLicenseServer restart**

TN/0003	Technical Support Note	<b>DEFINIENS</b> Understanding Images
Definiens XD and Definiens Enterprise Image Intelligence Suite	<b>Licensing Troubleshooting Guide</b>	Page 9 of 15

### 4.3 License rehost

This section describes the steps to perform a license rehost of the Definiens Linux License Server.

1. Perform a new Installation (**as described 4.1 Installation**) on the new Definiens License Server Machine and send the new created activation request to ([license@definiens.com](mailto:license@definiens.com)) with the comment to rehost your license.
2. After you confirm via mail ([license@definiens.com](mailto:license@definiens.com)) that the old license file is deleted. You will receive a new license file which you should use to finish the Installation on the new License Server Machine.

### 4.3 Troubleshoot using Imutil

This section describes how to troubleshoot your license server under Linux using Imutil.

1. Run following command in the license server Installation folder:

```
./Imutil lmdiag -c floating_server.lic
```

The default path is: `/opt/License Server Version number/`.

2. The output should be similar to this :

```
Imutil - Copyright (c) 1989-2006 Macrovision Europe Ltd. and/or Macrovision Corporation. All Rights Reserved.
```

```
FLEXIm diagnostics on Tue 12/23/2008 10:36
```

```
-----
```

```
License file: floating_server.lic this line tells you which license file is used
```

```
-----
```

```
"DefiniensDeveloper_XD" v1.0, vendor: DIALIC this line tells you which product is licensed
```

```
License server: PE1955N005.definiens.local
```

```
floating license starts: 1-jan-1990, expires: 22-dec-2009 this line tells you when the license will expire
```

**If your output shows errors please send the LicenseServer.log file which can be found in the License Server Installation folder to [license@definiens.com](mailto:license@definiens.com) for further debugging.**

### 3.5 Firewall Settings

This section describes how to configure your firewall for Definiens License Server.

1. Open the floating\_server.lic file which is in the Definiens License Server installation folder. The default path is: `/opt/License Server Version number/`.

TN/0003	Technical Support Note	<b>DEFINIENS</b> Understanding Images
Definiens XD and Definiens Enterprise Image Intelligence Suite	<b>Licensing Troubleshooting Guide</b>	Page 10 of 15

2. Example of a license file header:

```
SERVER localhost DISK_SERIAL_NUM=abcdefg [{COMPport_1}]
VENDOR DIALIC [PORT={ComPort_2}]
...
```

Adapt the license file concerning the two necessary ports:

-The default `COMPport_1` is 27000. This port is used by the `Imgrd` application which is the macrovision license server. If you select another value than 27000 you have to adapt all Definiens **floating.lic** files located in the software installations manually.

-The default `COMPport_2` is random. This port is used by the `DIALIC` application which depends on the `Imgrd` and shares the Definiens Product Licenses.

3. If you changed the value of `COMPport_1` in step 2 you have to change all **floating.lic** files, which are part of each Definiens software installation, such as:

- Definiens eCognition Grid Infrastructure Software on the primary node
- Definiens eCognition Node Software on processing nodes
- Definiens Enterprise Image Intelligence Clients.

**Note**

The adaption of `floating.lic` files is not supported by the installer. During Definiens installations, you have to select Set licensing later on the Select the Definiens Licensing Option screen.

For each Definiens installation, open the **floating.lic** file. The default path is:

**C:\Program Files\Definiens** *Software name, Version*  
*number\bin\lic\floating.lic*

4. Example of a **floating.lic** file:

```
SERVER [license server IP or DNS name] ANY [{COMPport_1}]
USE_SERVER
```

Change the `COMPport_1` manually to the same value as used in step 2.

5. Open the firewall for port **COMPport\_1** and **COMPport\_2**.

TN/0003	Technical Support Note	<b>DEFINIENS</b> Understanding Images
Definiens XD and Definiens Enterprise Image Intelligence Suite	<b>Licensing Troubleshooting Guide</b>	Page 11 of 15

## 5 License Troubleshoot Definiens Client/Server

### 5.1 Clients (Developer,Architect,Analyst,Viewer)

1.Open the floating.lic file which can be found in **C:\Program Files\Definiens Client or component name, Version number\lic\** folder.

2. Make sure that in the first line you put in the right DNS or IPAddress of you license server. Here a example:

```
SERVER licmuc ANY
USE_SERVER
```

3. If you had chosen a different port on the license server Installation please add the port to your floating.lic file.

Example of a **floating.lic** file:

```
SERVER [license server IP or DNS name] ANY [{COMPport_1}]
USE_SERVER
```

Change the `COMPport_1` manually to the same value as used in **3.5 Firewall Settings**.

4. Open the firewall for port **COMPport\_1** and **COMPport\_2**  
You can find an example using Windows XP under section **5.5 Windows XP Firewall Settings example**

### 5.2 eCognition Server (Windows)

1.Open all floating.lic files which can be found in **C:\Program Files\Definiens Grid, Version number\bin\lic\** and **C:\Program Files\Definiens Grid, Version number\bin\Product Server Version number \lic\**.

2. Make sure that in the first line you put in the right DNS or IPAddress of you license server. Here is an example:

```
SERVER licmuc ANY
USE_SERVER
```

3. If you had chosen a different port on the license server Installation please add the port to your floating.lic file.

Example of a **floating.lic** file:

```
SERVER [license server IP or DNS name] ANY [{COMPport_1}]
USE_SERVER
```

Change the `COMPport_1` manually to the same value as used in **3.5 Firewall Settings**.

4. Open the firewall for port **COMPport\_1** and **COMPport\_2**

TN/0003	Technical Support Note	<b>DEFINIENS</b> Understanding Images
Definiens XD and Definiens Enterprise Image Intelligence Suite	<b>Licensing Troubleshooting Guide</b>	Page 12 of 15

You can find an example using Windows XP under section **5.5 Windows XP Firewall Setting's example**

### 5.3 eCognition Server (Linux)

1. Open all floating.lic files which can be found in `/opt/Definiens Grid, Version number/bin/lic/` and `/opt/Definiens Grid, Version number/bin/Product Server Version number/lic/`.

2. Make sure that in the first line you put in the right DNS or IPAddress of you license server. Here a example:

```
SERVER licmuc ANY
USE_SERVER
```

3. If you had chosen a different port on the license server Installation please add the port to your floating.lic file.

Example of a **floating.lic** file:

```
SERVER [license server IP or DNS name] ANY [COMPort_1]
USE_SERVER
```

Change the `COMPort_1` manually to the same value as used in **3.5 Firewall Settings**.

4. Open the firewall for port **COMPort\_1** and **COMPort\_2**

### 5.4 License borrowing

1. To open the **Definiens License borrowing tool**, go to the **Windows Start** menu and choose **Start > All Programs > Definiens Product Version Number > Definiens License Borrowing**

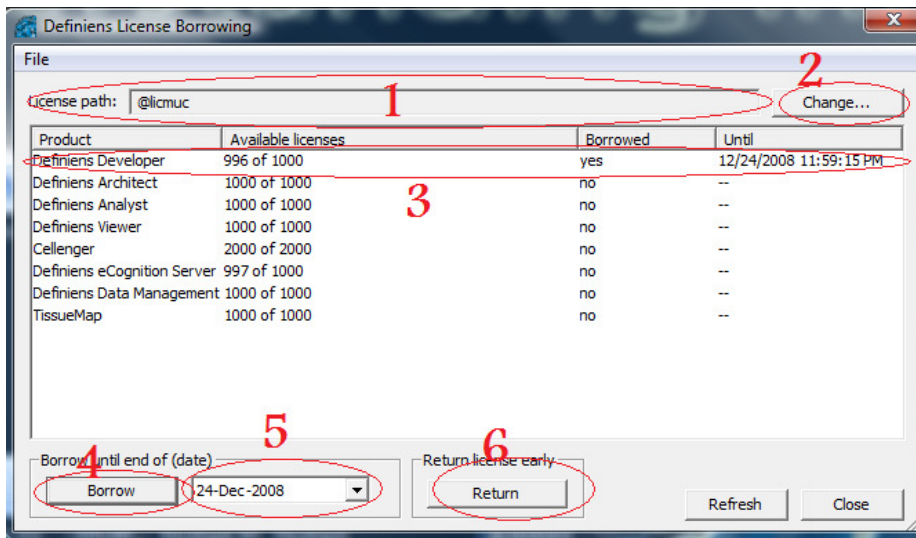
2. Make sure that in the **License path(1)** is the correct path to you floating.lic file. If not you can go on **Change(2)** and specify the path or the DNS(IP) of your license server.

3. On the **product tab(3)** please mark the product you want to borrow. If you already have borrowed a license this will be shown here.

4. **Choose a date(4)** how long you want to borrow the license ( the maximum borrowing time is limited to 1 month)

5. Now you can **Borrow(5)** the license. If you want to borrow additional licenses just start again from **step 3**.

6. The license will be automatically returned to the license server when the chosen borrowing time is reached. But you can also return the license earlier choosing the button **Return(6)**.



## Note

If you are using the Definiens License Borrowing tool with Definiens Enterprise Image Intelligence Suite before 7.0.7 or Definiens XD 1.1 please always borrow the **EarthFramework** or **LifeFramework** with the Product.

If you are missing one of your products in the product tab please contact [license@definiens.com](mailto:license@definiens.com) how will provide you a new LicenseBorrow.xml file.

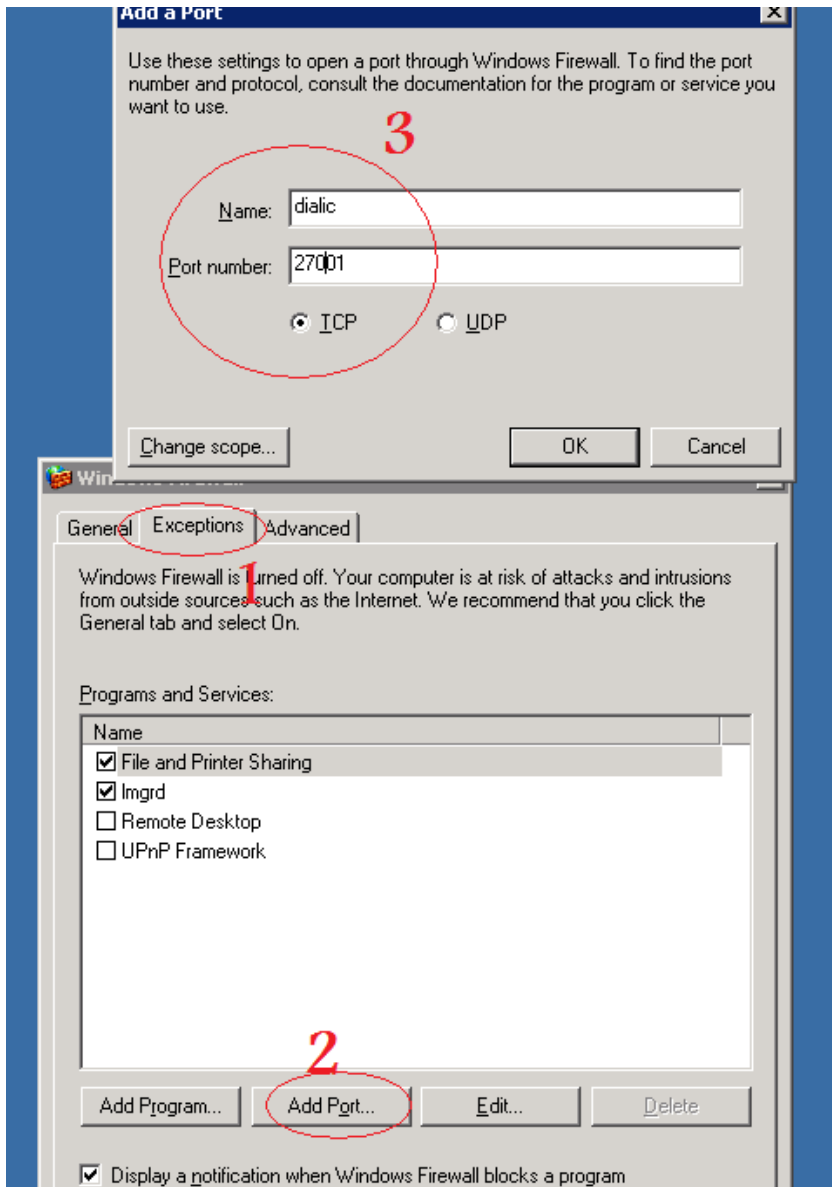
Please note that the Definiens License Borrowing tool is currently not working correctly under Windows Vista.

## 5.5 Windows XP Firewall Settings example

This section describes the steps to configure Windows XP Firewall to communicate with the License Server.

1. To open the Windows Firewall Configuration, go to the Windows Start menu and choose **Start > Control Panel > Windows Firewall**
2. On the tab **Exceptions(1)** you have to add(2) the two ports you configure on the license server (**see 3.5 Firewall settings**).

TN/0003	Technical Support Note	<b>DEFINIENS</b> Understanding Images
Definiens XD and Definiens Enterprise Image Intelligence Suite	<b>Licensing Troubleshooting Guide</b>	Page 14 of 15



TN/0003	Technical Support Note	<b>DEFINIENS</b> Understanding Images
Definiens XD and Definiens Enterprise Image Intelligence Suite	<b>Licensing Troubleshooting Guide</b>	Page 15 of 15

## 6 FAQ

### **What is the Definiens License server?**

The Definiens license server is a small software application that checks to see if there are any licenses currently available for the user to utilize the software.

### **Are there any specific recommendations where to install a Definiens License server?**

The license server should be installed on a machine in the network which is always available. A users desktop PC is a bad choice. It should also be sited on a reliable network segment with low latency to ensure reliability.

### **What is a floating license?**

A floating license allows multiple users to share use of an application from any PC that has the software installed on it. To use floating licenses a license server (small software component) must be installed on the network. By default Definiens issues floating licenses for all products.

### **How can I work offline with Definiens products?**

Definiens supports license borrowing which allows you to reserve a license for offline use.

### **When using Definiens TissueMap, TMA or Cellenger why is a server license required and removed from the pool of available licenses on our server?**

Definiens applications are only sold with Definiens Servers. When an application processes images using the Definiens Applications the software checks for the presence of at least one server license. To support disconnected working this server license must be available for checking. To enable this the license must be borrowed from the server. If working from home this check can be conducted by connecting to the remote license server using a VPN.

### **Can I install a license server in a global location and share licenses in this way?**

Definiens standard license policy prohibits global floating licenses.

### **If I already have a Macrovision license server for other software can I deploy Definiens license files to this machine?**

Definiens does not currently support sharing a license server in this way. You should have a dedicated license server for Definiens Licenses.

### **What is the “LifeFramework” or “EarthFramework” in the license file?**

The Life- or EarthFramework define in which mode in which the Definiens Client/Server starts. This affects the default connectors and drivers and the portals which are available for the user to select when starting the software.